

Fire sprinkler system

A fire sprinkler system is an active fire protection measure, consisting of a water supply system, providing adequate pressure and flow rate to a water distribution piping system, onto which fire sprinklers are connected. Although historically only used in factories and large commercial buildings, systems for home and small building are now available at a cost-effective price. Fire sprinkler systems are extensively used worldwide.

Prepared By Mechanical Engineer

Kamal Hama Ahmad

KEU ID no. / 1414 Sul. Bran.

٢٠١٣

Fire sprinkler system

A glass bulb type sprinkler head will spray water into the room if sufficient heat reaches the bulb and causes it to shatter. Sprinkler heads operate individually. Note the red liquid in the glass bulb.

A **fire sprinkler system** is an active fire protection measure, consisting of a water supply system, providing adequate pressure and flow rate to a water distribution piping system, onto which fire sprinklers are connected. Although historically only used in factories and large commercial buildings, systems for home and small building are now available at a cost-effective price. Fire sprinkler systems are extensively used worldwide, with over 4 million sprinkler heads fitted each year. In buildings completely protected by fire sprinkler systems, over 99% of fires were controlled by fire sprinklers alone.

Contents

- 1 -History
- 2- Usage
- 3 -US regulations
- 4 -Europe
- 5 -Operation
- 6 -Types
 - 6.1 Wet pipe systems
 - 6.2 Dry pipe systems
 - 6.3 Deluge systems
 - 6.4 Pre-action Systems
 - 6.5 Foam water sprinkler systems
 - 6.6 Water spray
 - 6.7 Water mist systems
- 7 Design
- 8 Fire Sprinkler Head Styles
- 9 References

1 -History

The world's first recognizable sprinkler system was installed in the Theatre Royal, Drury Lane in the United Kingdom in 1812 by its architect. The system was designed by Sir William Congreve, 2nd Baronet was covered by a patent No 3666 dated the same year. The apparatus consisted of a cylindrical airtight reservoir of 400 hogsheads (~90,000 liters) fed by a 10 inches (250 mm) water main which branched to all parts of the theatre. A series of smaller pipes feed from the distribution pipe were pierced with a series of 1/4 inches (13 mm) holes which pour water in the event of a fire.¹

From 1802 to 1880, perforated pipe systems were used in textile mills throughout New England as a means of fire protection. However, they were not automatic systems; they did not turn on by themselves. Inventors first began experimenting

with automatic sprinklers around 1860. The first automatic sprinkler system was patented by Philip W. Pratt of Abington, MA, in 1872.

Henry S. Parmalee of New Haven, Connecticut is considered the inventor of the first automatic sprinkler head. Parmalee improved upon the Pratt patent and created a better sprinkler system. In 1873, he installed his fire sprinkler system into the piano factory that he owned. Frederick Grinnell improved Parmalee's design and in 1881 patented the automatic sprinkler that bears his name. He continued to improve the device and in 1890 invented the glass disc sprinkler, essentially the same as that in use today.

Until the 1940s, sprinklers were installed almost exclusively for the protection of commercial buildings, whose owners were generally able to recoup their expenses with savings in insurance costs. Over the years, fire sprinklers have become mandatory safety equipment in some parts of North America, in certain occupancies, including, but not limited to newly constructed hospitals, schools, hotels and other public buildings, subject to the local building codes and enforcement.

However, outside of the US and Canada, sprinklers are rarely mandated by building codes for normal hazard occupancies which do not have large numbers of occupants (e.g. factories, process lines, retail outlets, petrol stations etc.)

2-Usage

Sprinklers have been in use in the United States since 1873, and were used in factory applications where fires at the turn of the century were often catastrophic in terms of both human and property losses. In the US, sprinklers are today required in all new high rise and underground buildings generally 30 feet (9.3 m) above or below fire department access, where the ability of firefighters to provide adequate hose streams to fires is limited.

Sprinklers may be required to be installed by building codes, or may be recommended by insurance companies to reduce potential property losses or business interruption. Building codes in the United States for places of assembly, generally over 100 persons, and places with overnight sleeping accommodation such as hotels, nursing homes, dormitories, and hospitals usually require sprinklers either under local building codes, as a condition of receiving State and Federal

funding or as a requirement to obtain certification (essential for institutions who wish to train medical staff).

Since ۲۰۱۱, Pennsylvania and California require sprinkler systems in all new residential construction - the first US states to do so.

۲-US regulations

While there is very little specific federal legislation regarding building codes, which are generally left to local jurisdictions, the federal government has used its funding and monetary clout to strongly encourage fire safety standards in construction. Since ۲۰۱۱, two states, California and Pennsylvania have required sprinklers in at least some new residential construction.

In ۱۹۹۰ the US Congress passed PL-۱۰۱-۳۹۱, better known as "The Hotel and Motel Safety Act (of ۱۹۹۰)". This law requires that any hotel, meeting hall, or similar institution that receives federal funds (i.e. for a government traveller's overnight stay, or a conference, etc.), must meet fire and other safety requirements. The most visible of these conditions are the implementation of sprinklers.

As more and more hotels, etc., upgraded their facilities to enable acceptance of government visitors, this type of construction became the de facto industry norm - even when not directly mandated by any local building codes.

If building codes do not explicitly mandate the use of fire sprinklers, the code often makes it highly advantageous to install them as an optional system. Most US building codes allow for less expensive construction materials, larger floor area limitations, longer egress paths, and fewer requirements for fire rated construction in structures protected by fire sprinklers. Consequently, the total building cost is often less by installing a sprinkler system and savings money in the other aspects of the project, as compared to building a non-sprinkle red structure. In the UK, since the ۱۹۹۰s sprinklers have gained recognition within the Building Regulations (England and Wales) and Scottish Building Standards and under certain circumstances, the presence of sprinkler systems is deemed to provide a form of alternative compliance to some parts of the codes. For example, the presence of a sprinkler system will usually permit doubling of compartment sizes and increases in travel distances (to fire exits) as well as allowing a reduction in the fire rating of internal compartment walls.

ξ-Europe

Renewed interest in and support for sprinkler systems in the UK, largely as a result of effective lobbying by the National Fire Sprinkler Network, the European Fire Sprinkler Network and the British Automatic Fire Sprinkler Association, has resulted in sprinkler systems being more widely installed. In schools, for example, the government has issued recommendations through Building Bulletin 100 that most new schools should be constructed with sprinkler protection. In 2011 Wales became the first country in the world where sprinklers are compulsory in all new homes. The law will apply to newly built houses and blocks of flats, as well as care homes and university halls of residence. In Scotland, all new schools are sprinkler red, as are new care homes, sheltered housing and high rise flats. In Norway as of July 2010, all new housing of more than two storeys, all new hotels, care homes and hospitals must be sprinkler red. Other Nordic countries require or soon will require sprinklers in new care homes and in Finland as of 2010 a third of care homes were retrofitted with sprinklers. A fire in an illegal immigrant detention centre at Schiphol airport in The Netherlands on 27 October 2008 killed 11 detainees and led to the retrofitting of sprinklers in all similarly designed prisons in The Netherlands. A fire at Düsseldorf airport on 11 April 1996 which killed 17 people led to sprinklers being retrofitted in all major German airports. Most European countries also require sprinklers in shopping centers, in large warehouses and in high-rise buildings.

•-Operation

Each closed-head sprinkler is held closed by either a heat-sensitive glass bulb or a two-part metal link held together with fusible alloy. The glass bulb or link applies pressure to a pip cap which acts as a plug which prevents water from flowing until the ambient temperature around the sprinkler reaches the design activation temperature of the individual sprinkler head. In a standard wet-pipe sprinkler system, each sprinkler activates independently when the predetermined heat level is reached. Because of this, the number of sprinklers that operate is limited to only those near the fire (in reality, normally one or two will activate), thereby maximizing the available water pressure over the point of fire origin. This also minimizes the water damage to the building.

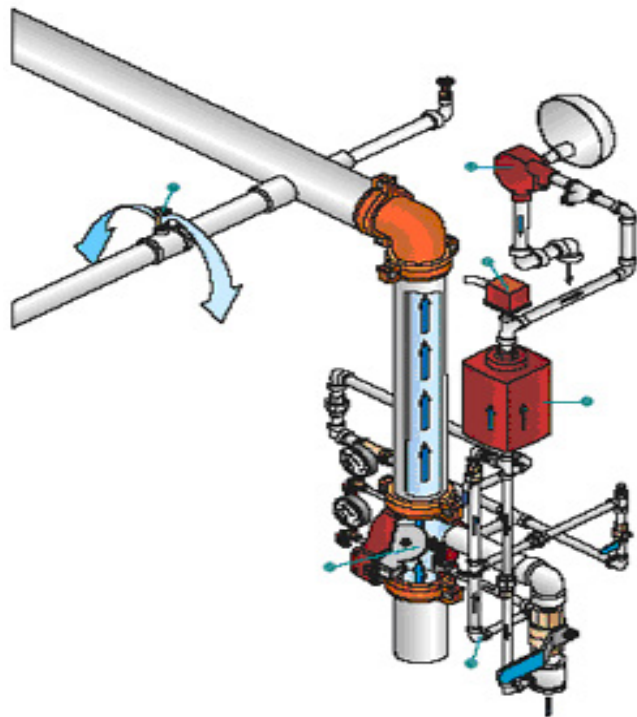
Sprinkler activation will do less damage than a fire department hose stream, which provides approximately 900 liters/min (250 US gallons/min). A typical sprinkler

used for industrial manufacturing occupancies discharge about 70-100 liters/min (18-26 US gallons/min). However, a typical Early Suppression Fast Response (ESFR) sprinkler at a pressure of 100 psi (6.9 MPa) will discharge approximately 100 US gallons per minute (3.8 m³/s). In addition, a sprinkler will usually activate between one and four minutes, whereas the fire department typically takes at least five minutes to arrive at the fire site after receiving an alarm, and an additional ten minutes to set up equipment and apply hose streams to the fire. This additional time can result in a much larger fire, requiring much more water to extinguish.

7-Types

7-1 Wet pipe systems

By a wide margin, wet pipe sprinkler systems are installed more often than all other types of fire sprinkler systems. They also are the most reliable, because they are simple, with the only operating components being the automatic sprinklers and (commonly, but not always) the automatic alarm check valve. An automatic water supply provides water under pressure to the system piping.

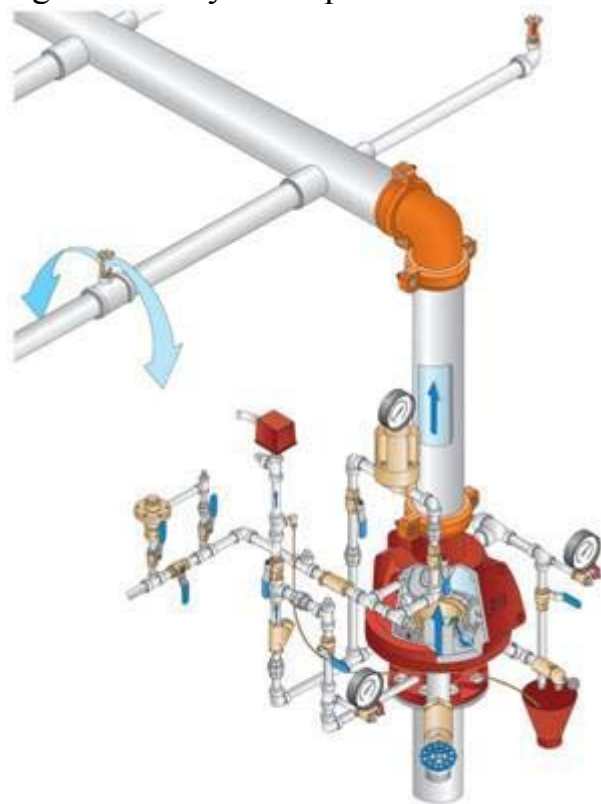


7-2 Dry pipe systems

Dry pipe systems are installed in spaces in which the ambient temperature may be cold enough to freeze the water in a wet pipe system, rendering the system inoperable. Dry pipe systems are most often used in unheated buildings, in parking garages, in outside canopies attached to heated buildings (in which a wet pipe system would be provided), or in refrigerated coolers. Dry pipe systems are the second most common sprinkler system type. In regions using NFPA regulations, dry pipe systems cannot be installed unless the range of ambient temperatures reaches above 40°F.

Operation - Water is not present in the piping until the system operates. The piping is filled with air below the water supply pressure. To prevent the larger water supply pressure from forcing water into the piping, the design of the dry pipe valve (a specialized type of check valve) results in a greater force on top of the check valve clapper by the use of a larger valve clapper area exposed to the piping air pressure, as compared to the higher water pressure but smaller clapper surface area.

When one or more of the automatic sprinklers is exposed, for a sufficient time, to a temperature at or above the temperature rating, it opens, allowing the air in the piping to vent from that sprinkler. Each sprinkler operates individually. As the air pressure in the piping drops, the pressure differential across the dry pipe valve changes, allowing water to enter the piping system. Water flow from sprinklers, needed to control the fire, is delayed until the air is vented from the sprinklers. In regions using NFPA 13 regulations, the time it takes water to reach the hydraulically remote sprinkler from the time that sprinkler is activated is limited to a maximum of 60 seconds. In industry practice, this is known as the "Maximum Time of Water Delivery." The maximum time of water delivery may be required to be reduced,



Schematic of a dry pipe sprinkler system.

depending on the hazard classification of the area protected by the sprinkler system.

Some view dry pipe sprinklers as advantageous for protection of collections and other water sensitive areas. This perceived benefit is due to a fear that wet system piping may leak, while dry pipe systems will not. However, the same potential for accidental water damage exists, as dry pipe systems will only provide a slight delay prior to water discharge while the air in the piping is released from the pipe.

Disadvantages of using dry pipe fire sprinkler systems include:

- Increased complexity - Dry pipe systems require additional control equipment and air pressure supply components which increases system complexity. This puts a premium on proper maintenance, as this increase in system complexity results in an inherently less reliable overall system (i.e., more single failure points) as compared to a wet pipe system.
- Higher installation and maintenance costs - The added complexity impact the overall dry-pipe installation cost, and increases maintenance expenditure primarily due to added service labor costs.
- Lower design flexibility - Regulatory requirements limit the maximum permitted size (i.e., 700 gallons) of individual dry-pipe systems, unless additional components and design efforts are provided to limit the time from sprinkler activation to water discharge to under one minute. These limitations may increase the number of individual sprinkler zones (i.e., served from a single riser) that must be provided in the building, and impact the ability of an owner to make system additions.
- Increased fire response time - Because the piping is empty at the time the sprinkler operates, there is an inherent time delay in delivering water to the sprinklers which have operated while the water travels from the riser to the sprinkler, partially filling the piping in the process. A maximum of 60 seconds is normally allowed by regulatory requirements from the time a single sprinkler opens until water is discharged onto the fire. This delay in fire suppression results in a larger fire prior to control, increasing property damage.
- Increased corrosion potential - Following operation or testing, dry-pipe sprinkler system piping is drained, but residual water collects in piping low spots, and moisture is also retained in the atmosphere within the piping. This moisture, coupled with the oxygen available in the compressed air in the piping, increases pipe internal wall corrosion rates, possibly eventually leading to leaks. The internal pipe wall corrosion rate in wet pipe systems (in

which the piping is constantly full of water) is much lower, as the amount of oxygen available for the corrosion process is lower. Corrosion can be combated by using galvanized steel pipe which is less susceptible to corrosion, or by using nitrogen to pressurize the system, rather than air. These additional precautions will increase the cost of the system, but can help prevent system failure and premature need for system replacement in the future.

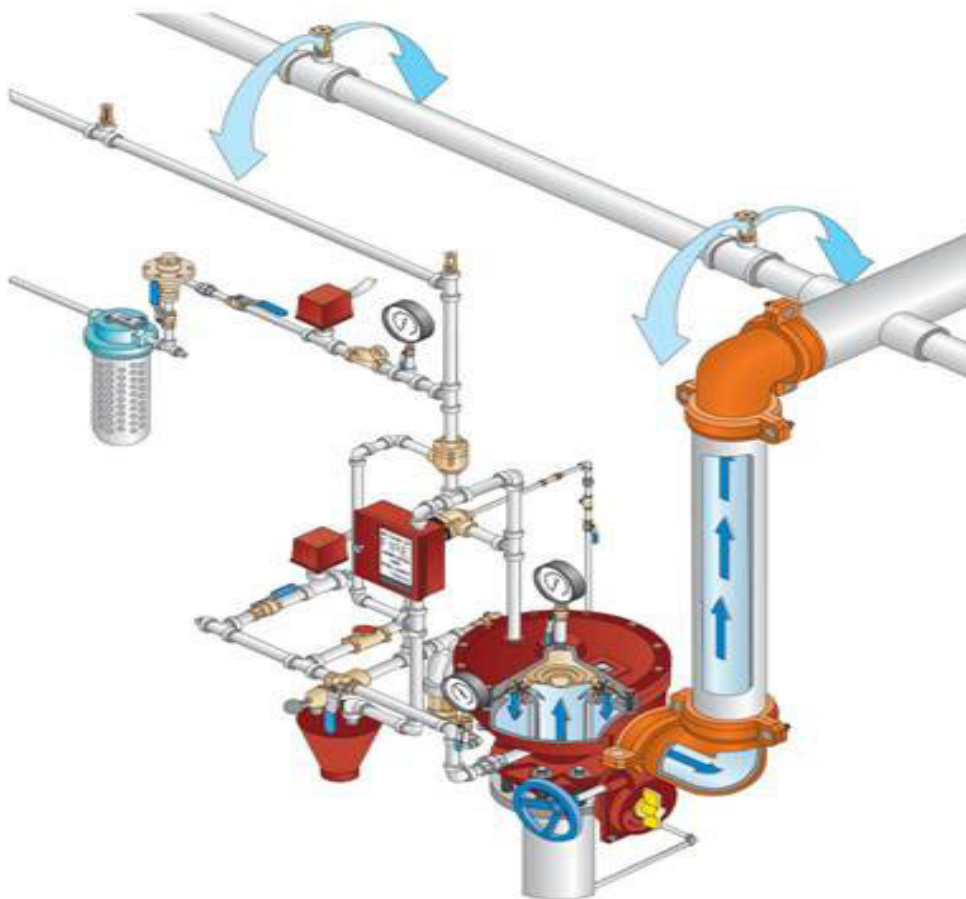
٦-٣ Deluge systems

"Deluge" systems are systems in which all sprinklers connected to the water piping system are open, in that the heat sensing operating element is removed, or specifically designed as such. These systems are used for special hazards where rapid fire spread is a concern, as they provide a simultaneous application of water over the entire hazard. They are sometimes installed in personnel egress paths or building openings to slow travel of fire (e.g., openings in a fire-rated wall).

Water is not present in the piping until the system operates. Because the sprinkler orifices are open, the piping is at atmospheric pressure. To prevent the water supply pressure from forcing water into the piping, a *deluge valve* is used in the water supply connection, which is a mechanically latched valve. It is a non-resetting valve, and stays open once tripped.

Because the heat sensing elements present in the automatic sprinklers have been removed (resulting in open sprinklers), the deluge valve must be opened as signaled by a fire alarm system. The type of fire alarm initiating device is selected mainly based on the hazard (e.g., smoke detectors, heat detectors, or optical flame detectors). The initiation device signals the fire alarm panel, which in turn signals the deluge valve to open. Activation can also be manual, depending on the system goals. Manual activation is usually via an electric or pneumatic fire alarm pull station, which signals the fire alarm panel, which in turn signals the deluge valve to open.

Operation - Activation of a fire alarm initiating device, or a manual pull station, signals the fire alarm panel, which in turn signals the deluge valve to open, allowing water to enter the piping system. Water flows from all sprinklers simultaneously.



Schematic of a pneumatically actuated deluge system

٦-٤ Pre-action Systems

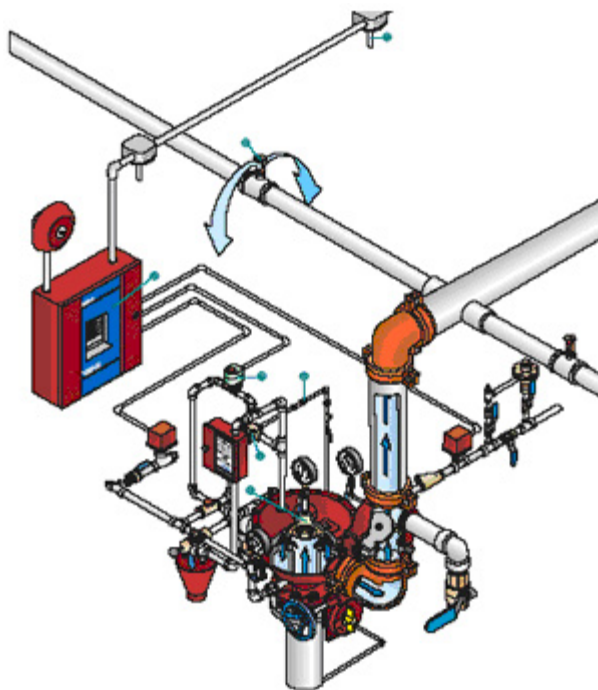
Pre-action sprinkler systems are specialized for use in locations where accidental activation is undesired, such as in museums with rare art works, manuscripts, or books; and Data Centers, for protection of computer equipment from accidental water discharge.

Pre-action systems are hybrids of wet, dry, and deluge systems, depending on the exact system goal. There are two main sub-types of pre-action systems: single interlock, and double interlock.

The operation of single interlock systems are similar to dry systems except that these systems require that a “preceding” fire detection event, typically the activation of a heat or smoke detector, takes place prior to the “action” of water introduction into the system’s piping by opening the pre-action valve, which is a mechanically latched valve (i.e., similar to a deluge valve). In this way, the system is essentially converted from a dry system into a wet system. The intent is to

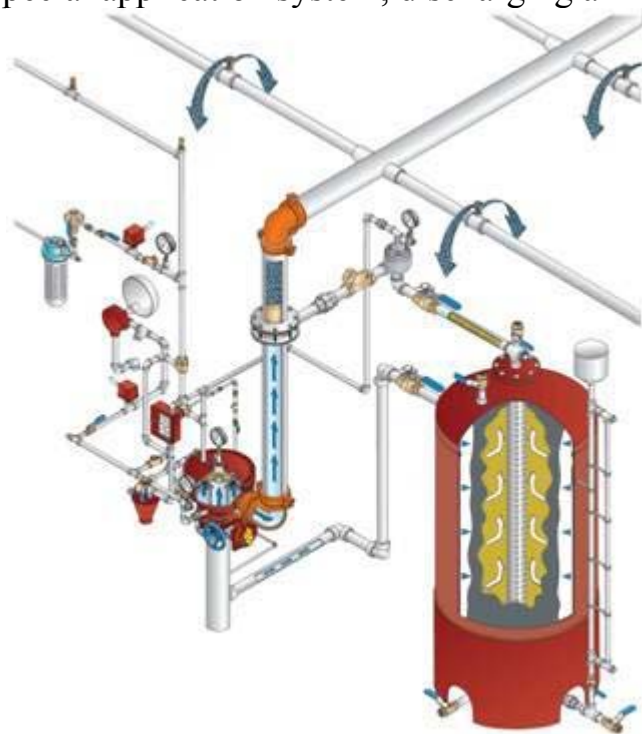
reduce the undesirable time delay of water delivery to sprinklers that is inherent in dry systems. Prior to fire detection, if the sprinkler operates, or the piping system develops a leak, loss of air pressure in the piping will activate a trouble alarm. In this case, the pre-action valve will not open due to loss of supervisory pressure, and water will not enter the piping.

The operation of double interlock systems is similar to deluge systems except that automatic sprinklers are used. These systems require that both a “preceding” fire detection event, typically the activation of a heat or smoke detector, and an automatic sprinkler operation take place prior to the “action” of water introduction into the system’s piping. Activation of either the fire detectors alone, or sprinklers alone, without the concurrent operation of the other, will not allow water to enter the piping. Because water does not enter the piping until a sprinkler operates, double interlock systems are considered as dry systems in terms of water delivery times, and similarly require a larger design area.



٦-٥ Foam water sprinkler systems

A foam water fire sprinkler system is a special application system, discharging a mixture of water and low expansion [foam](#) concentrate, resulting in a foam spray from the sprinkler. These systems are usually used with special hazards occupancies associated with high challenge fires, such as [flammable liquids](#), and airport [hangars](#). Operation is as described above, depending on the system type into which the foam is injected.



Schematic of a foam water deluge system

٦-٦ Water spray

"Water spray" systems are operationally identical to a deluge system, but the piping and discharge nozzle spray patterns are designed to protect a uniquely configured hazard, usually being three dimensional components or equipment (i.e., as opposed to a deluge system, which is designed to cover the horizontal floor area of a room). The nozzles used may not be listed fire sprinklers, and are usually selected for a specific spray pattern to conform to the three dimensional nature of the hazard (e.g., typical spray patterns being oval, fan, full circle, narrow jet). Examples of hazards protected by water spray systems are electrical transformers containing oil for cooling or turbo-generator bearings. Water spray systems can also be used externally on the surfaces of tanks containing flammable liquids or gases (such as hydrogen). Here the water spray is intended to cool the tank and its contents to prevent tank rupture/explosion (BLEVE) and fire spread.

٦-٧ Water mist systems

Water mist systems are used for special applications in which it is decided that creating a heat absorbent vapor is the primary objective. This type of system is typically used where water damage may be a concern, or where water supplies are limited. NFPA 701 defines water mist as a water spray with a droplet size of "less than 1000 microns at the minimum operation pressure of the discharge nozzle." The droplet size can be controlled by the adjusting discharge pressure through a nozzle of a fixed orifice size. By creating a mist, and equal volume of water will create a larger total surface area exposed to the fire. The larger total surface area better facilitates the transfer of heat, thus allowing more water droplets to turn to steam more quickly. Steam, which absorbs more heat than water per unit time, will then more effectively cool the room, thus reducing the temperature of the flame.

Operation - Water mist systems can operate with the same functionality as deluge, wet pipe, dry pipe, or pre-action systems. The difference is that a water mist system uses a compressed gas as an atomizing medium, which is pumped through the sprinkler pipe. Instead of compressed gas, some systems use a high-pressure pump to pressurize the water so it atomizes as it exits the sprinkler nozzle. Systems can be applied using local application method or total flooding method, similar to Clean Agent Fire Protection Systems.

V-Design

Temperature		Colour of liquid
°C	°F	inside bulb
57	135	Orange
68	150	Red
79	174	Yellow
93	200	Green
141	286	Blue
182	360	Mauve
227 260	440 500	Black

This chart from the New Zealand fire safety standards indicates the color of the bulb and the respective operating temperature.

Sprinkler systems are intended to either *control* the fire or to *suppress* the fire. *Control mode* sprinklers are intended to control the heat release rate of the fire to prevent building structure collapse, and pre-wet the surrounding combustibles to prevent fire spread. The fire is not extinguished until the burning combustibles are exhausted or manual extinguishment is effected by firefighters. *Suppression mode* sprinklers (formerly known as *Early Suppression Fast Response (ESFR)* sprinklers) are intended to result in a severe sudden reduction of the heat release rate of the fire, followed quickly by complete extinguishment, prior to manual intervention.

Most sprinkler systems installed today are designed using an area and density approach. First the building use and building contents are analyzed to determine the level of fire hazard. Usually buildings are classified as light hazard, ordinary hazard group 1, ordinary hazard group 2, extra hazard group 1, or extra hazard group 2. After determining the hazard classification, a design area and density can be determined by referencing tables in the National Fire Protection Association (NFPA) standards. The design area is a theoretical area of the building representing the worst case area where a fire could burn. The design density is a measurement of how much water per square foot of floor area should be applied to the design area. For example, in an office building classified as light hazard, a typical design area would be 1,000 square feet (93 m²) and the design density would be 0.1 US gallons per minute (7.5 × 10⁻¹ m³/s) per 1 square foot (0.093 m²) or a minimum of 100 US gallons per minute (0.090 m³/s) applied over the 1,000-square-foot (93 m²) design area. Another example would be a manufacturing facility classified as ordinary hazard group 2 where a typical design area would be 1,000 square feet (93 m²) and the design density would be 0.2 US gallons per minute (1.5 × 10⁻¹ m³/s) per 1 square foot (0.093 m²) or a minimum of 200 US gallons per minute (0.18 m³/s) applied over the 1,000-square-foot (93 m²) design area.

After the design area and density have been determined, calculations are performed to prove that the system can deliver the required amount of water over the required design area. These calculations account for all of the pressure that is lost or gained

between the water supply source and the sprinklers that would operate in the design area. This includes pressure losses due to friction inside the piping and losses or gains due to elevational differences between the source and the discharging sprinklers. Sometimes momentum pressure from water velocity inside the piping is also calculated. Typically these calculations are performed using computer software but before the advent of computer systems these sometimes complicated calculations were performed by hand. This skill of calculating sprinkler systems by hand is still required training for a sprinkler system design technologist who seeks senior level certification from engineering certification organizations such as the National Institute for Certification in Engineering Technologies (NICET).

Sprinkler systems in residential structures are becoming more common as the cost of such systems becomes more practical and the benefits become more obvious. Residential sprinkler systems usually fall under a residential classification separate from the commercial classifications mentioned above. A commercial sprinkler system is designed to protect the structure and the occupants from a fire. Most residential sprinkler systems are primarily designed to suppress a fire in such a way to allow for the safe escape of the building occupants. While these systems will often also protect the structure from major fire damage, this is a secondary consideration. In residential structures sprinklers are often omitted from closets, bathrooms, balconies, garages and attics because a fire in these areas would not usually impact the occupant's escape route.

If water damage or water volume is of particular concern, a technique called *Water Mist Fire Suppression* may be an alternative. This technology has been under development for over 20 years. It hasn't entered general use, but is gaining some acceptance on ships and in a few residential applications. Mist suppression systems work by using the heat of the fire to 'flash' the water mist cloud to steam. This then smothers the fire. As such, mist systems tend to be highly effective where there is likely to be a free-burning hot fire. Where there is insufficient heat (as in a deep seated fire such as will be found in stored paper, no steam will be generated and the mist system will not extinguish the fire. Some tests have shown that the volume of water needed to extinguish a fire with such a system installed can be dramatically less than with a conventional sprinkler system.

^Fire Sprinkler Head Styles

Sprinkles have different head styles, common sprinkler deflector styles are upright (mounted above the pipe), pendent (mounted below the pipe, i.e. under ceilings), and sidewall sprinklers which discharge water in a lateral position from a wall. The sprinkler must be mounted as

designed to ensure proper action. Selection of a particular style is often dependent upon physical building constraints.

Conventional



Upright



Pendent



Horizontal Sidewall



Vertical Sidewall



Recessed Pendent



Recessed Pendent



Concealed Horizontal Sidewall



Concealed Pendent



9-References

١. [^] "Industrial Fire sprinklers". Fire Safety Advice Centre.
<http://www.firesafe.org.uk/industrial-fire-sprinklers/>. Retrieved ٦ February ٢٠١٣.
٢. [^] "Fire Sprinklers". Fire Sprinklers Scotland.
http://www.h٢ofiresprinklers.co.uk/fire_sprinklers.php. Retrieved ٦ February ٢٠١٣.
٣. [^] Wormald, John (December ١٩٢٣). "History Automatic Fire Sprinklers". Olyfire.com.
<http://www.olyfire.com/history.html>. Retrieved ٨ February ٢٠١٣.
٤. [^] Sprinkler History Merit Sprinkler Company
٥. [^] Casey Cavanaugh Grant, PE The Birth of NFPANFPA ١٩٩٦
٦. [^] Wotapka, Dawn (٢٢ December ٢٠١٠). "Builders Smokin' Mad Over New Sprinkler Rules". The Wall Street Journal.
<http://blogs.wsj.com/developments/٢٠١٠/١٢/٢٢/builders-smokin-mad-over-new-sprinkler-rules/>.
٧. [^] Wotapka, Dawn (٢٢ December ٢٠١٠). "Builders Smokin' Mad Over New Sprinkler Rules". The Wall Street Journal.
<http://blogs.wsj.com/developments/٢٠١٠/١٢/٢٢/builders-smokin-mad-over-new-sprinkler-rules/>.
٨. [^]
 [<http://www.bbc.co.uk/news/uk-wales-١٢٤٧٧٩٨٣>. Retrieved ٤ August ٢٠١١.](http://www.nfpa.org/itemDetail.asp?categoryID=٦٣٢&itemID=٢٠٩٠٣&URL=Safety%٢٠Information/For%٢٠consumers/Occupancies/Hotels%٢٠and%٢٠motels&cookie_test=١^{[d}ead link]
٩. [^] <u>)
١٠. [^] NFPA ١٣ ٢٠٠٧ ed. Sections ٧-٢ and A٧-٢
١١. [^] NFPA ١٣ ٢٠١٠ ed. Table ٧.٢.٣.٦.١
١٢. [^] NFPA ٧٥.
١٣. [^] "Pump units". Hi-Fog. http://www.marioff.com/hi-fog/components/pump-units/en_GB/pump_units/. Retrieved ٦ February ٢٠١٣.
١٤. [^] <http://darwin.nap.edu/books/٠٣٠٩٠٥٧٨٢٥/html/٨٥.html> ^[dead link]
١٥. [^] "Home Fire Sprinkler Cost Assessment", published ٢٠٠٨ by the Fire Protection Research Foundation